



OCEAN  
OBSERVATORY  
BERWICKSHIRE



# SPECIES ID GUIDE

This guide is to help with identification of that marine species featured across the ocean observatory. The scientists at Blue Marine have been recording underwater footage using a variety of methods to collect data about the diversity and health of animals in the MPA.

**Take a look at our underwater videos and see if you can spot the species below!**

## CRUSTACEANS

Crustaceans in Berwickshire underpin important fisheries and support ecosystem health...

### EDIBLE CRAB



credit @ Jim Greenfield : Ocean Eye Photo

### VELVET SWIMMING CRAB



credit @ Lawson Wood: Ocean Eye Films

### COMMON LOBSTER



credit @ Lawson Wood: Ocean Eye Films

### SPINY SQUAT LOBSTER



credit @ Lawson Wood: Ocean Eye Films

credit @ Nathan Piper







OCEAN  
OBSERVATORY  
BERWICKSHIRE



# FISH

Fish in Berwickshire come in many shapes and sizes...

COD



BALLAN WRASSE



credit @ Jim Greenfield : Ocean Eye Photo

GOLDSINNY WRASSE



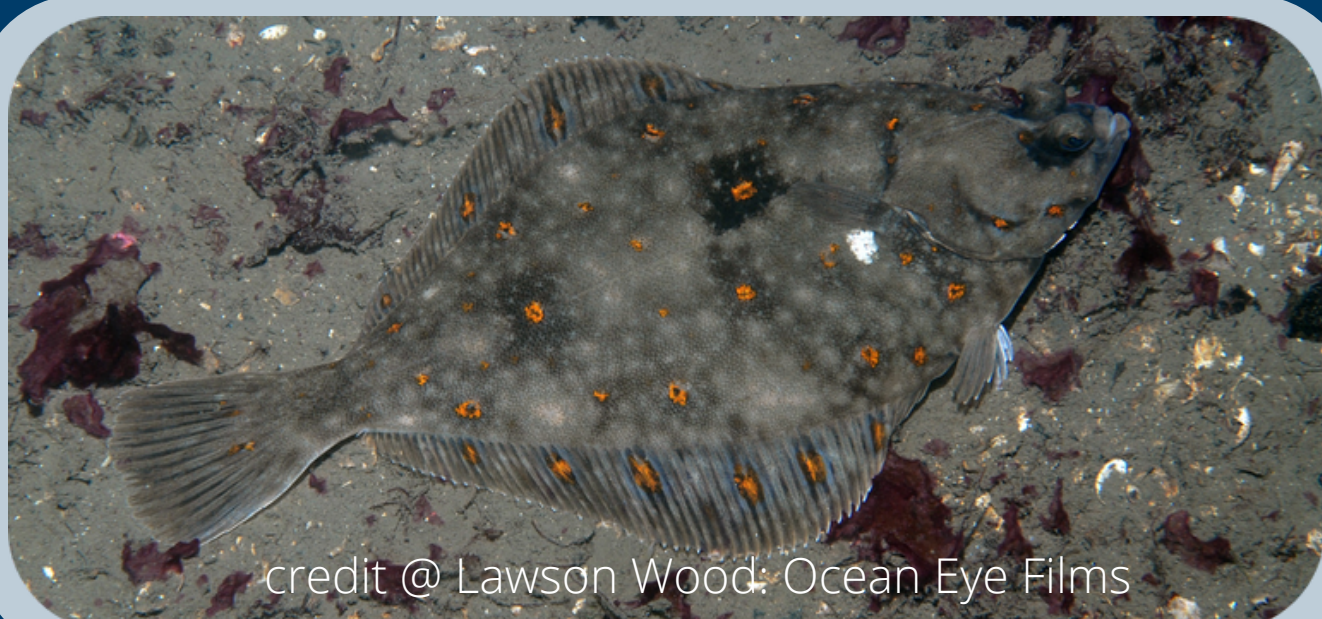
credit @ Jim Greenfield : Ocean Eye Photo

BIB



credit @ Jim Greenfield : Ocean Eye Photo

FLATFISH (PLAICE)



credit @ Lawson Wood: Ocean Eye Films

FLATFISH (DAB)



credit @ Lawson Wood: Ocean Eye Films







**OCEAN  
OBSERVATORY**  
BERWICKSHIRE



# ECHINODERMS

Echinoderms in Berwickshire are abundant, often sprawling in high densities across the seafloor...

## COMMON STARFISH



credit @ Jim Greenfield: Ocean Eye Photo

## SUNSTAR



credit @ Lawson Wood: Ocean Eye Films

## EDIBLE URCHIN



credit @ Lawson Wood: Ocean Eye Films

# BRYOZOANS

Bryozoans in Berwickshire form turfs which are eaten by sea slugs (nudibranchs)...



## BRYOZOAN



credit @ Lawson Wood: Ocean Eye Films







**OCEAN  
OBSERVATORY**  
BERWICKSHIRE



# CNIDARIANS

Cnidarians in Berwickshire include soft corals and dazzling anemones...

## DEAD MAN'S FINGERS



credit @ Lawson Wood: Ocean Eye Films

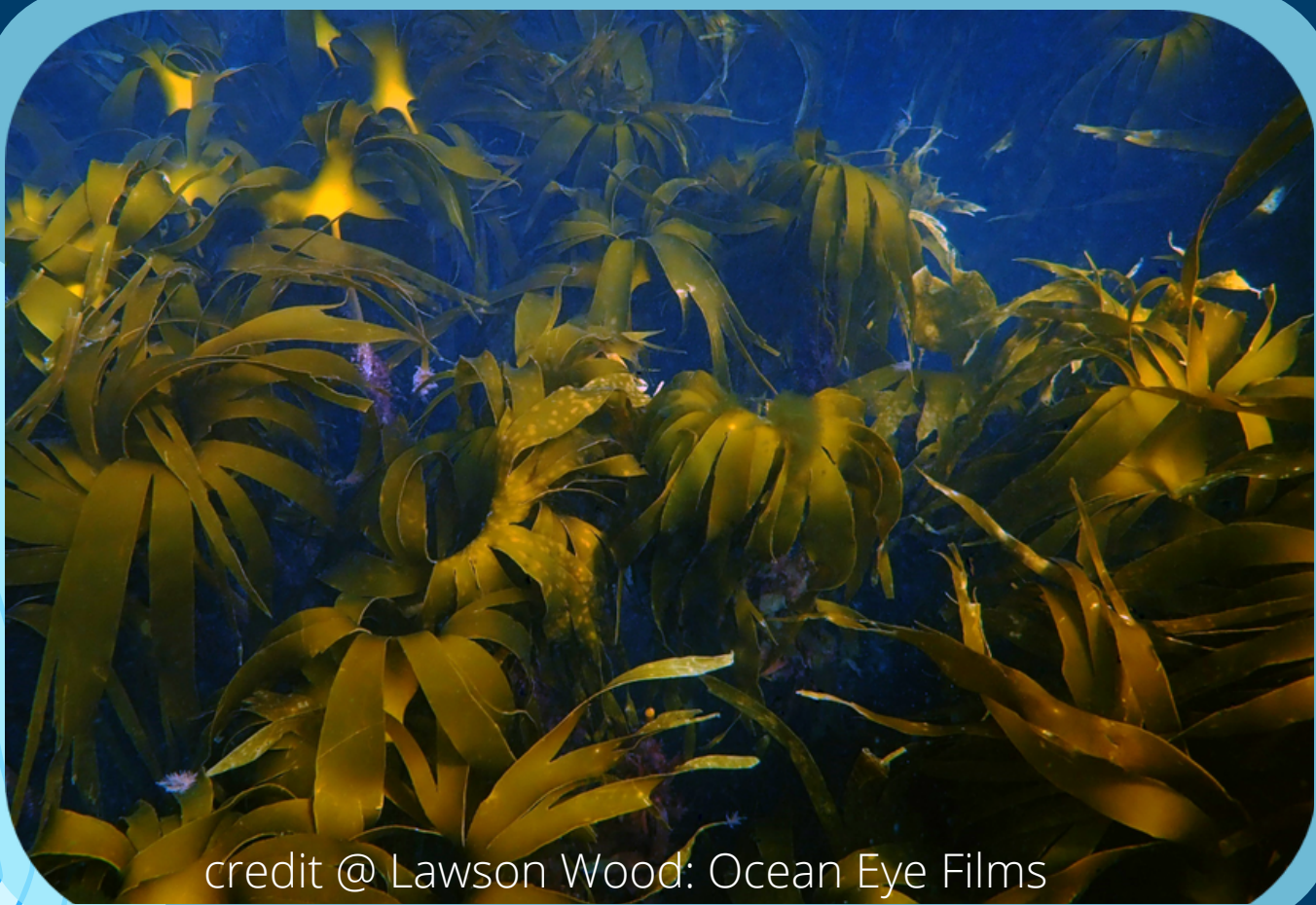
## ANEMONES



credit @ Lawson Wood: Ocean Eye Films

# KELP

Kelp in Berwickshire forms beautiful forests which provide protection for many other species...



credit @ Lawson Wood: Ocean Eye Films



credit @ Jim Greenfield: Ocean Eye Photo



credit @ Lawson Wood: Ocean Eye Films





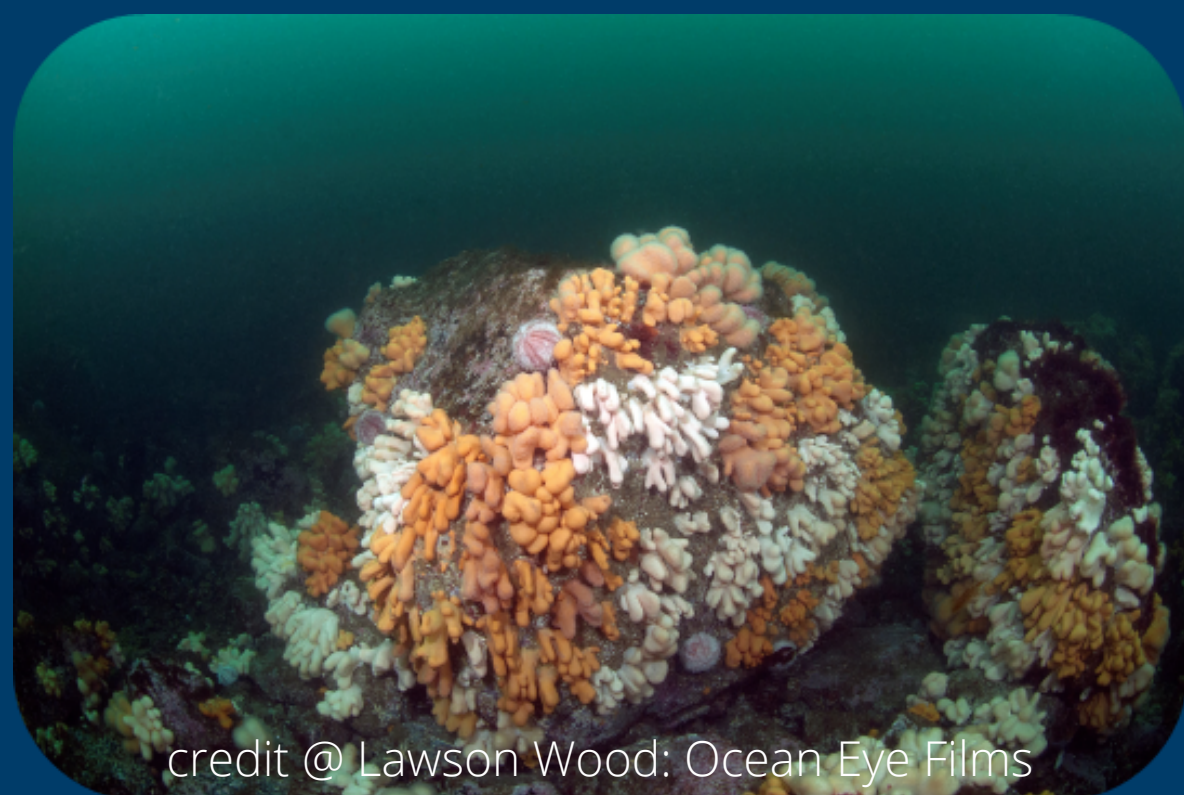


OCEAN  
OBSERVATORY  
BERWICKSHIRE

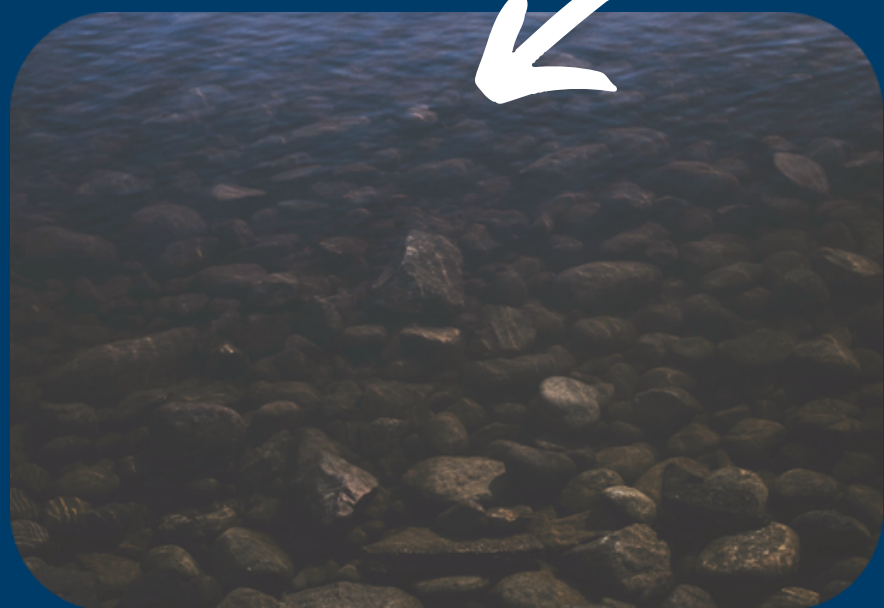


# HABITAT TYPES

There are various habitat types in Berwickshire which have different characteristics, and so are home to different species...



ROCKY REEF  
BOULDERS  
COBBLES & PEBBLES  
SAND & GRAVEL  
SHIPWRECK  
MIXED  
OTHER







**OCEAN  
OBSERVATORY**  
BERWICKSHIRE

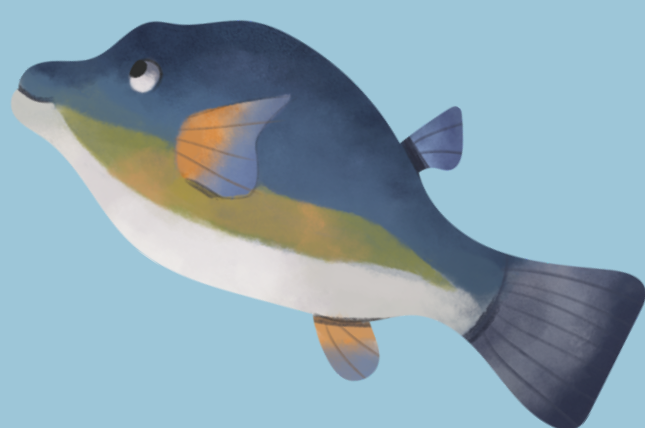
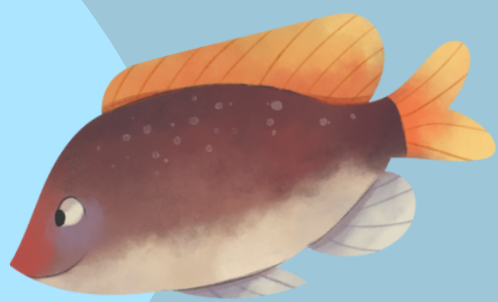


# HELP SHEET

Identifying species from photos alone can be tricky! This sheet provides some tips for spotting these species...

## CRUSTACEANS

- **Edible Crab**
  - Brown / orange in colour
  - Quite large
  - Black tips on its pincers
  - Looks like a pasty!
- **Velvet Swimming Crab**
  - Red eyes
  - Grey-ish body with blue joints
  - Paddle-like, striped back legs
  - It can swim!
- **Common Lobster**
  - Long tail
  - Big pincers
  - Long, thin antennae
  - Blue-ish in colour
- **Long-Clawed Squat Lobster**
  - Very long claws!
  - Bright orange-red in colour
  - Quite small
  - Electric blue markings



## FISH

- **Cod**
  - Speckled brown-grey body with one horizontal stripe
  - Has a whisker!
  - 3 fins along its back (dorsal fins)
- **Ballan Wrasse**
  - Beautiful mottled/spotty green and brown markings
  - Quite large (60cm+)
- **Goldsinny Wrasse**
  - Dark spot at the base of the tail
  - Brown-orange or green in colour
  - Small (~12cm)
- **Bib**
  - Vertical brown-black stripes on a shiny silver body
  - Often in groups
  - 3 distinct dorsal fins
- **Plaice**
  - It's flat!
  - Brown with vivid orange spots
- **Dab**
  - It's flat!
  - Brown with darker speckles
- **Flounder**
  - It's flat!
  - Brown with dull red spots







**OCEAN  
OBSERVATORY**  
BERWICKSHIRE



# HELP SHEET

Identifying species from photos alone can be tricky! This sheet provides some tips for spotting your species...

## ECHINODERMS

- **Common Starfish**
  - Five arms
  - Orange-ish colour
  - Rough in texture
- **Sunstar**
  - Very bright orange-red colour, with purple, white or yellow patterning on the arms
  - Normally have 10-12 arms
- **Edible Urchin**
  - Round in shape
  - White, lilac or pink in colour
  - Has spines

## KELP

- A type of seaweed (algae)
- Has a long stipe (like a stalk) and flowing fronds (like leaves)
- Brown/green in colour

## BRYOZOANS

- Tiny, colonial organisms
- Form a crust, for example on kelp
- White-ish in colour

## CNIDARIANS

- **Dead Man's Fingers**
  - A type of soft coral
  - White and fluffy looking
  - Abundant in Berwickshire
- **Anemones**
- There are several different types in Berwickshire...
  - **Dahlia**
    - Different shades of pink
  - **Beadlet**
    - Usually red, occasionally brown/green
    - Has small blue 'beads' around the base of its tentacles
  - **Plumose**
    - Has a 'stalk'
    - 'Fluffy' tentacles
    - Only found in deeper water
  - **Snakelocks**
    - Usually purple and green
    - Long flowing tentacles
  - **Strawberry**
    - Looks like a strawberry! Red with tiny yellow dots

